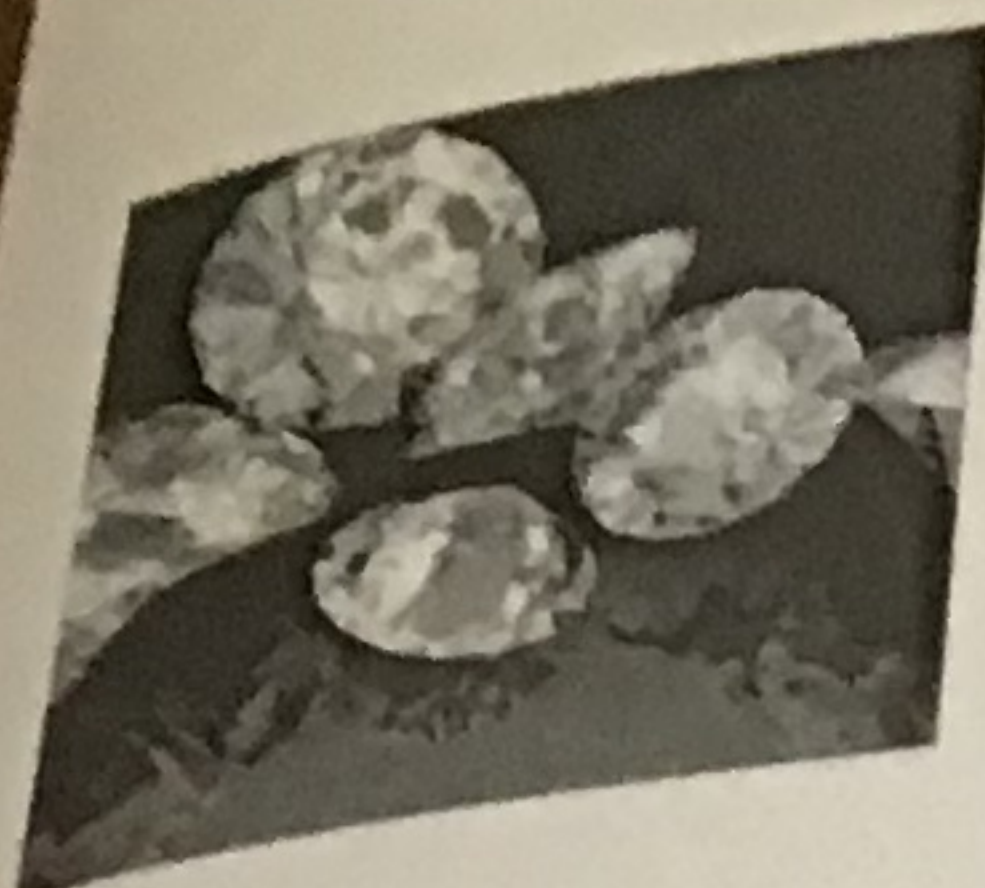


THE SHOPS — of Holland America —

WHITE DIAMOND TRUNK SHOW
White diamond trunk show starts.

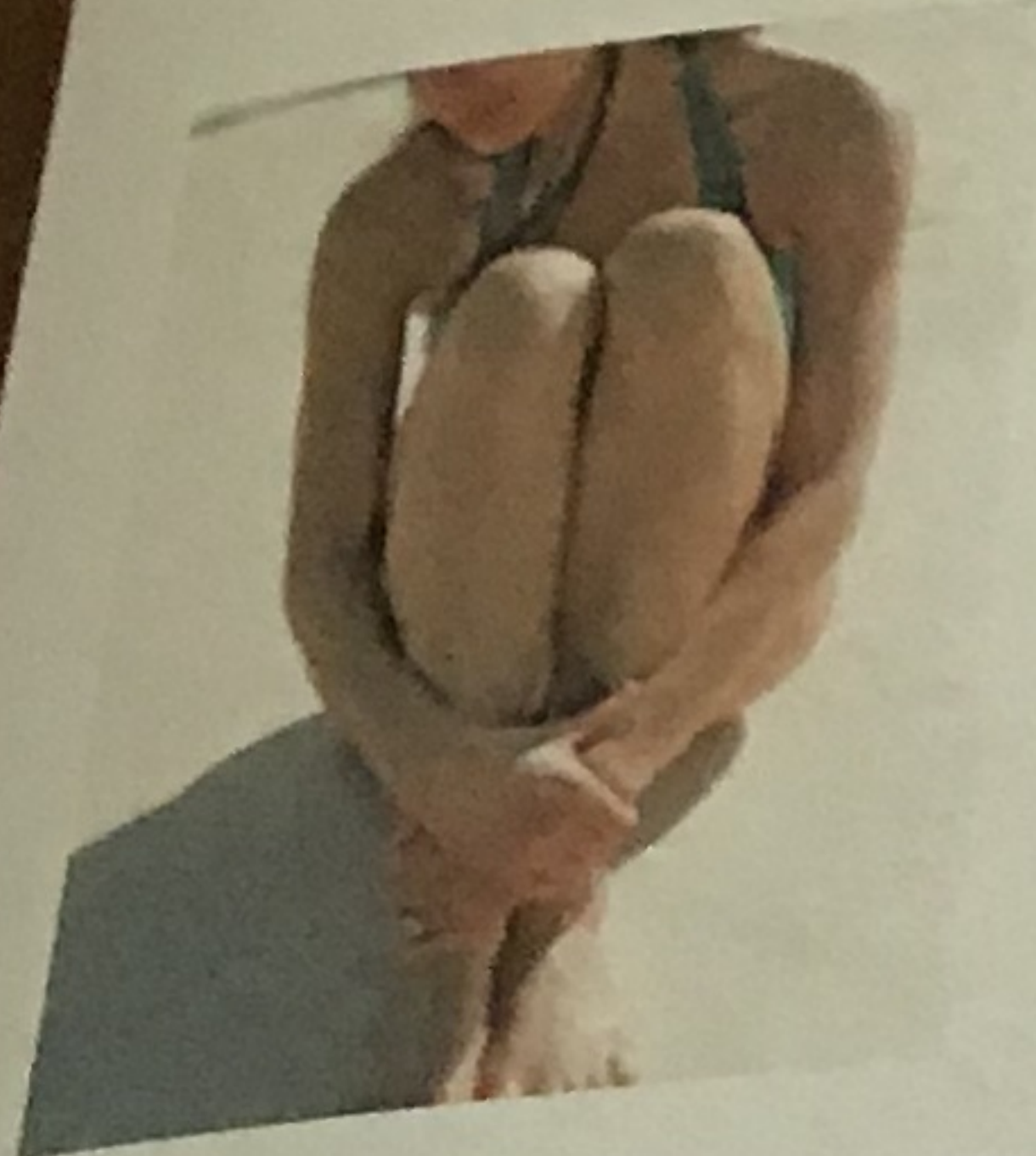
7:00pm, The Shops, 8



MOOR MUD

Ideal for poor circulation, swelling, varicose and aches and pains. You will feel the strain and heaviness drain out. Of your tired legs and water retention is reduced
40 minutes for \$79 only,

Please call the Greenhouse Spa on 94 to book your appointment

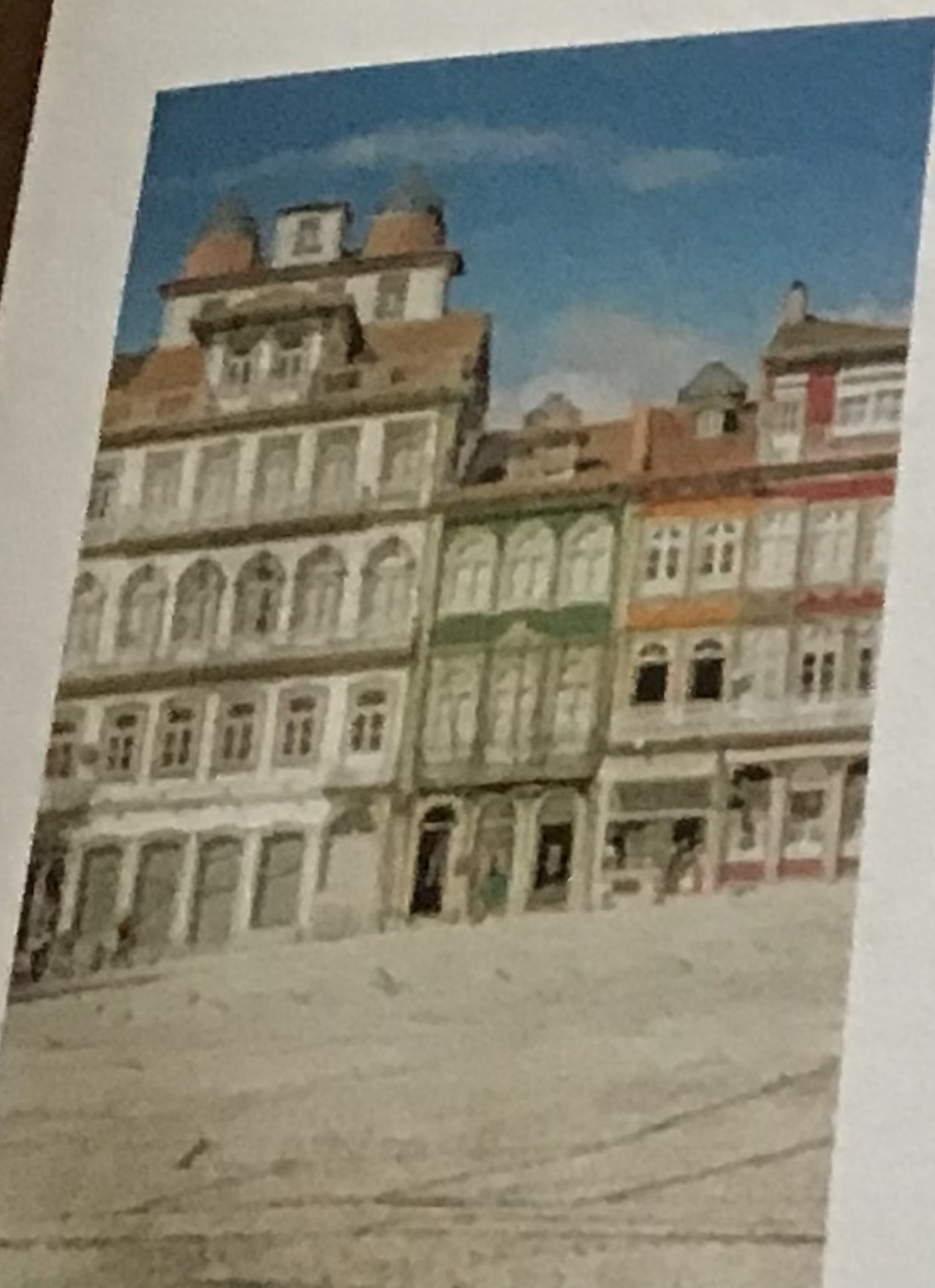


shore excursions

GUIMARAES: BIRTHPLACE OF A NATION
A journey to the original capital of Portugal, Guimaraes. You will see the medieval castle and visit the 15th century Palace of the Dukes of Braganca. See the latter houses a museum and art gallery before enjoying a walking tour through the Old Town.

For tour bookings see us during opening hours, visit the Front Office 24 hours a day or, use the Navigator on your mobile device.

5:00pm - 6:00pm Shore Excursions, 8



WHEN & WHERE

Monday, April 29, 2019

L I S B O N , P O R T U G A L

Tonight's Dress: Smart Casual

Weather: 78°F / 26°C, Partly Cloudy

Ship's Clocks will be set 1 hour Back at 2:00am

Arrival: 8:00am All Aboard: 5:30pm

GOING ASHORE IN LISBON

All guests are required to carry a government issued photo ID along with your ship keycard when going ashore in all ports.

LEARN TO USE YOUR DIGITAL CAMERA

Learn the basics of operating your digital camera such as different modes, settings, and other common features available to you.

10:30am, Digital Workshop, 7

ASK YOUR EXC GUIDE

Anything you'd like to know about our itinerary until 7:00pm

5:00pm, Atrium, 8



Holland America Line®
SAVOR THE JOURNEY

2:00am Ship's Clocks will be set 1 hour Back

6:00am Board Games & Puzzles are always available

7:00am Morning Stretch

7:30am Abs Class

8:00am Prinsendam arrives in Lisbon

Today's Sudoku is Available

9:00am Stretch & Release

9:30am **Windows** Get Creative with Paint 3D
Let us introduce you to the exciting world of 3D drawing and learn how easy it can be.

10:00am Meet for a game of Party Bridge until 12:00pm

Meet for a Game of Mahjong until 12:00pm

10:30am **Windows** Learn to Use Your Digital Camera
Learn the basics of operating your digital camera such as different modes, settings, and other common features available to you.

1:00pm Meet for a game of Chess

2:00pm Meet for a game of Party Bridge
Play continues until 4:00pm

Meet for a Game of Mahjong until 4:00pm

Ping Pong Players Meet

2:30pm Today's Movie: Night Train to Lisbon
(Romance/Thriller, R, 1 hour, 51 minutes)
Raimund Gregorius, a Swiss Professor, abandons his lectures and buttoned-down life to embark on a thrilling adventure that will take him on a journey to the very heart of himself.

3:00pm Tea is Served until 3:45pm

Meet for a game of Uno

Complimentary Footprint Analysis

Back Pain Relief through Acupuncture

3:30pm Golf Chipping Challenge

Future Cruise Consultant Available until 7:00pm

Exploration's Café, 8

Atrium, 4

Atrium, 4

Front Office, 8

Atrium, 4

Digital Workshop, 7

Half Moon Room, 7

Dining Room, 7 fwd

Digital Workshop, 7

Explorations Café, 8

Half Moon Room, 7

Dining Room, 7 fwd

Lido Poolside, 11

Wajang Theater, 8

Dining Room, 7

Explorations Café, 8

Greenhouse Spa, 9

Stuyvesant Room, 5

Atrium, 4

Future Cruises, 8

When going ashore, please remember to carry your Holland America Line ship's ID and a government-issued photo ID.

FINE DINING

The Dining Room, 7
7:30am - 9:00am
5:15pm - 9:00pm

Pinnacle Grill, 7
12:00pm - 1:00pm, \$10
5:30pm - 9:30pm, \$35
Dial 88 for reservations

Canaletto, 11
5:30pm - 9:30pm, \$15
Dial 88 for reservations

CASUAL DINING

Lido Market, 11
6:30am - 10:00am
11:30am - 2:00pm
2:00pm - 5:00pm*
5:30pm - 8:00pm
*Select stations available

Dive-In, 11
11:30am - 5:00pm

In-Room Dining
24 hours
Dial 92 to order

DRINKS

Coffee Drinks
Java Bar & Café opens at 6:30am

By The Pool
The Sea View Bar, 9 opens at 2:00pm
Lido Bar, 11 is open at 8:00am through the evening

Daytime
Ocean Bar, 7 opens at 3:00pm
Crow's Nest, 12 opens at 3:00pm

Evening
Crow's Nest, 12 is open until Late
Explorer's Lounge, 8 is open until Late
Ocean Bar, 7 is open until Late

CASINO

TRY OUR LUCKY LADIES EDITION AT THE BLACKJACK TABLE
Explore the new side bet and start playing today for only \$1. See the Casino Staff for details.

6:30pm, Casino, 8

PHOTO & VIDEO GALLERY

YOUR CRUISE MEMORIES
The Photography Team is available upon arrival on today's port.

Pier Ashore

FUTURE CRUISES

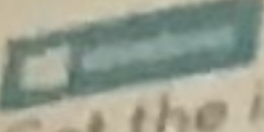
SIGN UP FOR THE HOLLAND AMERICA LINE REWARDS® VISA WHILE ONBOARD

Start earning points on this cruise toward future cruise discounts. For further information, or to apply, visit the Future Cruises Desk, or apply online, free of charge, on your own device or in the Explorations Café. Points never expire, no annual fee & no foreign transaction fees (U.S. guests only.)

Visit the Future Cruises Desk

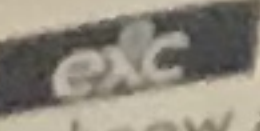
4:00pm Team Trivia Challenge

Happy Hour
Enjoy a second drink for only \$2.

4:30pm  Find the Right Device for You
Get the information you need to make smart decisions when choosing your next device.

Ring Toss Challenge

Friends of Bill W. Meet

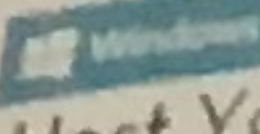
5:00pm  Ask Your EXC Guide Anything you'd like to know about our itinerary until 7:00pm.

Mass is Celebrated

Sip & Savor Enjoy our featured wine and appetizer of the day. Wine by the glass \$5.

LGBTQ & Friends Meetup

Evening Stretch

5:30pm  Q&A with your Digital Workshop
Host Your Digital Workshop Host, John, is available and ready to answer your questions about Windows 10.

Martini Sampling Our mixologist prepares three martinis. \$5 each.

6:00pm Prinsendam Departs Lisbon Join us for drink specials on deck from 5:30pm.

Cocktail Mixology: Dale deGroff Originals

6:30pm Manager's Deal of the Day: Travel Exclusive
Cosmetics 10% Off

Spotlight On: Opal

Watch Clearance Sale

7:00pm Evening Trivia Game

Today's Movie: Night Train to Lisbon
(Romance/Thriller, R, 1 hour, 51 minutes)

White Diamond Trunk Show Starts

On port days, the Medical Center is open from 8:00am to 10:00am,
then again from 4:00pm - 6:00pm

Ocean Bar, 7
Ocean Bar, 7
& Crow's Nest, 12
Digital Workshop, 7

Atrium, 4
Half Moon Room, 7
Atrium, 8

Wajang Theater, 8
Explorer's Lounge, 8

Crow's Nest, 12
Atrium, 4
Digital Workshop, 7

Ocean Bar, 7

Lido Poolside, 11

Crow's Nest, 12
The Shops, 8

The Shops, 8

The Shops, 8

Crow's Nest, 12
Wajang Theater, 8

The Shops, 8

OCEAN BAR

THE OCEAN QUARTET
4:45pm
7:00pm
8:45pm
9:45pm

EXPLORER'S LOUNGE

ADAGIO
6:00pm
7:15pm
9:00pm

CROW'S NEST

PIANO BAR
ENTERTAINER DANIEL
8:45pm - close

7:00pm Play Heads Up Hold'em
7:30pm Hatley Womens Apparel 25% Off
8:00pm



SHOWROOM AT SEA, 8

From the London Palladium, Comedian...

RIKKI JAY

"He's Fast, He's Funny ... and He's Calorie Free!"

8:30pm Allay Bracelets \$39

8:45pm Scratch Card Sale

9:00pm Elton John & Billy Joel: A Tribute to the Piano
Men with Piano Bar Entertainer Daniel

Happy Hour Enjoy a second drink for only \$2

Today's Movie: Night Train to Lisbon
(Romance/Thriller, R, 1 hour, 51 minutes)

10:00pm Encore Performance: Rikki Jay

10:45pm Late Night with Daniel at the Piano

Guests age 18 and over are welcome to purchase and consume alcoholic beverages.
Proper identification is required, and guests will be asked to verify their age.